

R-1025

911 HARNESS TRUSS INSTALLATION INSTRUCTIONS

Note: This harness mount bar is designed to fit all Porsche 911 models with shoulder belts, excluding Targa and Cabriolet.

MOUNTING BAR IN CAR

Step 1

Remove both shoulder strap "D" rings. Do this by unsnapping the plastic escutcheon on each "D" ring to expose the mounting bolt. Remove the bolt, "D" ring and washer/ washers together because they will be re-attached the same way they came off.

Step 2

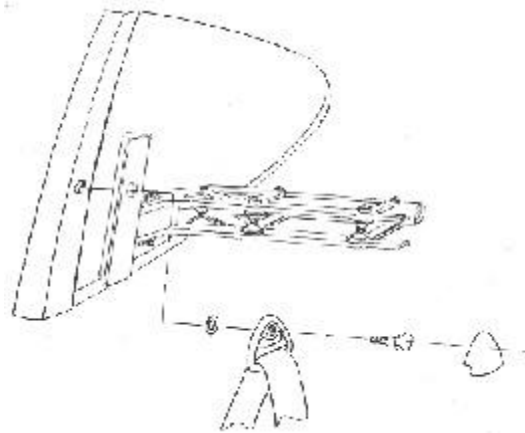
Loosen the end bracket mounting bolts slightly to permit movement of the end brackets. Position the mount between the pillars, lining up the "D" ring mounting holes with the holes in the harness guide bar.

Step 3

Reinstall the "D" rings and their mounting hardware. Torque bolts to factory specifications. Reinstall escutcheons.

Step 4

Once all of the hardware is installed and the bar is positioned properly, re-tighten end bracket mounting bolts. When removing the bar, leave end brackets installed by removing end bracket mounting bolts and washers only. This makes reinstallation easier.



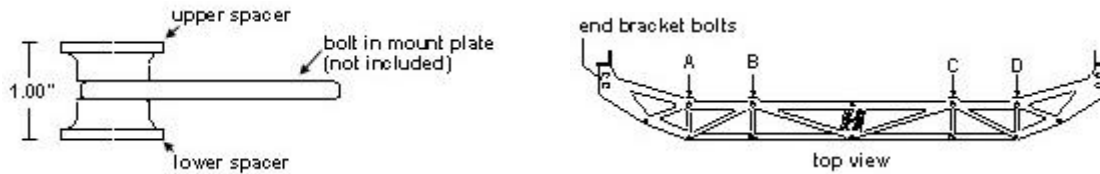
* ORIGINAL EQUIPMENT

Note: Factory hardware varies from year to year. The orientation shown may not match yours. Reinstall original hardware the way it came off.

MOUNTING HARNESSSES TO BAR

There are (4) mounting points (A,B,C,D) for mounting shoulder harnesses, (2) per side. The mounting points are designed for use with 3/16" thick bolt in mount plates provided with most harnesses.

- 1.) Remove harness mounting bolts and spacers from the harness mount bar.
- 2.) Position bolt in mount plate between the spacers provided and reinstall bolt and locknut. (See below)



***NOTE:** Do not use bolt in plates other than 3/16" thick so that the overall height of the (2) spacers and plate are 1.00".

Performance driving events are by nature potentially hazardous to your health. Brey-Krause Mfg. Co. Inc. shall not be liable for injury, consequential, or other types of damages resulting from the use or misuse of our products. Proper installation of these parts is critical and should only be done by a professional shop.